

# MS-6

## Features

1. Stainless steel made body offers outstanding durability.
2. Easy to connect to piping, inexpensive.
3. Easy to maintain.

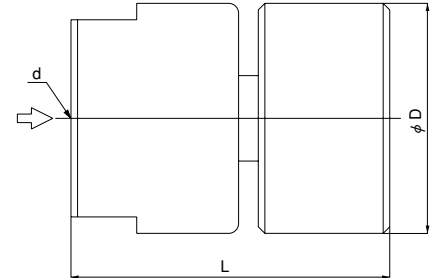
## Specification

Application	Steam
Working pressure	0.05-0.7 MPa
Max. warning sound temperature limit	90°C
Material	Stainless steel
Connection	JIS Rc screwed

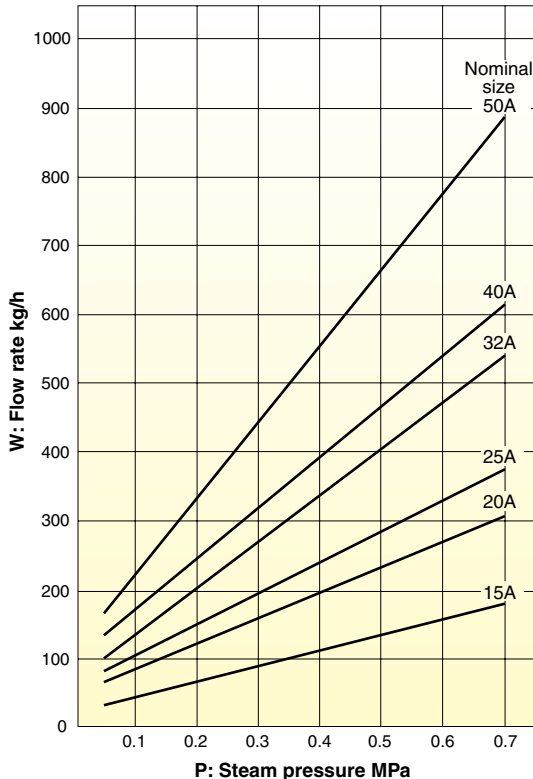


## Dimensions (mm) and Weights (kg)

Nominal size	d	L	D	Weight
15A	Rc 1/2	48.5	35	0.25
20A	Rc 3/4	49	45	0.40
25A	Rc 1	52	50	0.52
32A	Rc 1-1/4	55	60	0.77
40A	Rc 1-1/2	59	70	1.15
50A	Rc 2	65	105	2.99

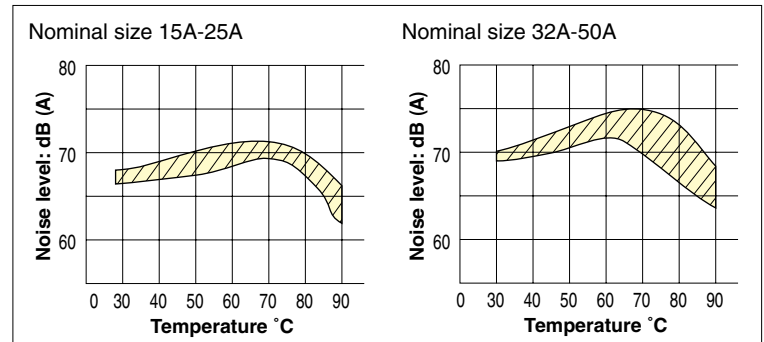


## Nominal Size Selection Chart

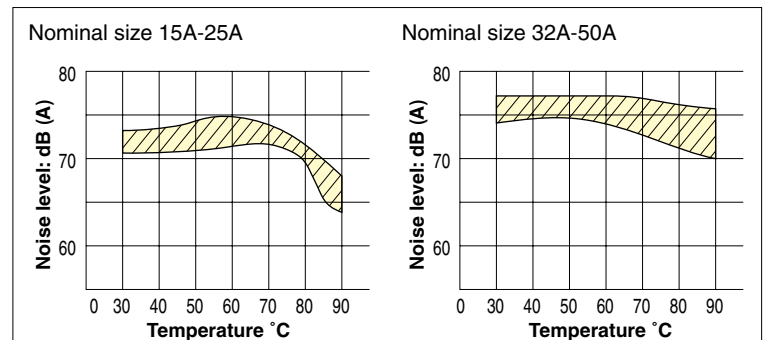


## Noise Characteristic Chart

### ● Steam pressure {0.3 MPa}



### ● Steam pressure {0.5 MPa}



- The steam noise characteristic chart depends on the size or shape of the liquid tank, the location of the noiseless heater, and other factors. Use it for reference.
- The noise level was measured at a point 1 meter above the water surface.