

# TS-1

The TS-1 radiator trap is used for a wide variety of radiators for heating.

## Features

1. Reduced noise.
2. Bellows type of air trouble free.
3. The bellows is manufactured from selected material under strict quality control. Quick discharge of condensate from the system, and no steam leakage with long service life.
4. Never freezing.

## Specifications

Application		Steam condensate
Maximum pressure		100 kPa *
Maximum temperature		120°C
Material	Body	Cast bronze
	Valve, valve seat	Brass
	Bellows	Phosphor bronze
	Union	Brass
Connection		Inlet: JIS R screwed (union joint) Outlet: JIS Rc screwed

\* Available with 200 kPa (TS-1HA or TS-1HS, only 25A).



TS-1A  
<Angle type>



TS-1S  
<Straight type>

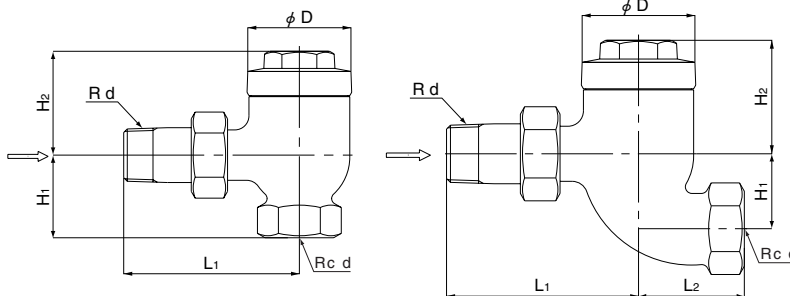
## Dimensions (mm) and Weights (kg)

### ● TS-1A

Nominal size	d	L <sub>1</sub>	H <sub>1</sub>	H <sub>2</sub>	D	Weight
15A	1/2	80	35	39	52	0.6
20A	3/4	87	41	51.5	52	0.9
25A	1	105	52	49	52	1.6

### ● TS-1S

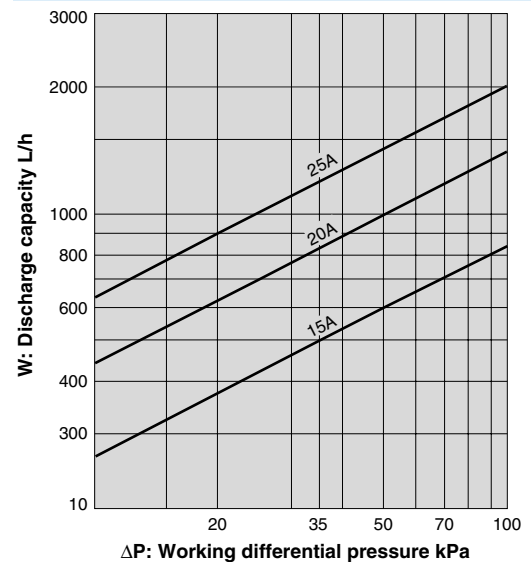
Nominal size	d	L <sub>1</sub>	L <sub>2</sub>	H <sub>1</sub>	H <sub>2</sub>	D	Weight
15A	1/2	80	43	28	39	52	0.7
20A	3/4	87	48	34	51.5	52	1.0
25A	1	105	60	40	49	52	1.7



TS-1A <Angle type>

TS-1S <Straight type>

## Maximum Continuous Discharge Capacity Chart



- This chart shows the maximum discharge. In designing a system, set a sufficient safety factor (two or three times).