

TF-1·2

Features

1. The stainless steel valve disc and valve seat offer excellent durability (TF-2).
2. Built-in air vent prevents air-binding problem, offering higher durability.
3. Compact, lightweight and large discharge capacity due to unique pressure balance mechanism.
4. Reliable performance and large discharge capacity ensured by lever float system.
5. Easy maintenance and inspection.

Specifications

Model		TF-1	TF-2
Application		Steam condensate	
Working pressure		0.01-0.3 MPa	0.01-0.7 MPa
Max. temperature		150°C	170°C
Material	Body	Ductile cast iron	
	Valve, valve seat	Cast bronze	Stainless steel
	Float	Brass	Stainless steel
Connection		JIS 10K RF flanged	JIS Rc screwed

Dimensions (mm) and Weights (kg)

TF-1

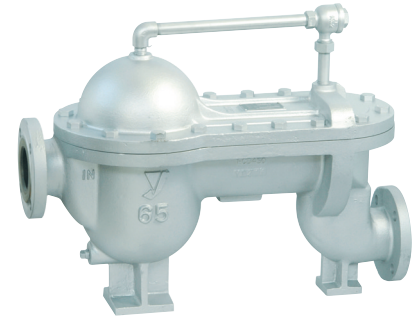
Nominal size	L	H	H ₁	H ₂	Weight
65A	680	530	260	100	84
80A	680	530	260	100	84

• H₁ and H are reference values.

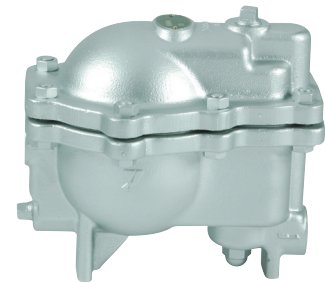
TF-2

Nominal size	d	L	H	H ₁	H ₂	Weight
15A	Rc 1/2	257	252	122	42	13.3
20A	Rc 3/4	257	252	122	42	13.3
25A	Rc 1	290	266	122	42	15.5
32A	Rc 1-1/4	290	266	122	42	15.5
40A	Rc 1-1/2	335	310	159	45	19.2
50A	Rc 2	335	310	159	45	19.2

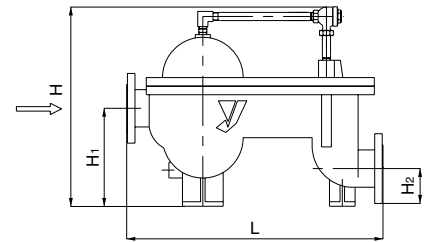
• H₁, H₂, and H are reference values.



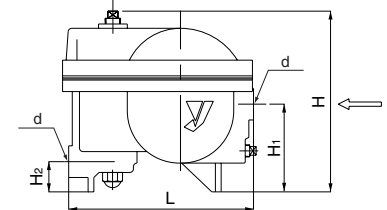
TF-1



TF-2



TF-1



TF-2

Maximum Continuous Discharge Capacity

TF-1

Nominal size	Working differential pressure MPa					
	0.05	0.10	0.15	0.20	0.25	0.30
65A	6,500	8,700	10,000	11,000	13,000	13,000
80A	6,500	8,700	10,000	11,000	13,000	13,000

• The discharge capacities shown in the table and chart are the maximum values. In designing a system, select a steam trap with a sufficient safety factor (three times to five times the regular level).

TF-2

